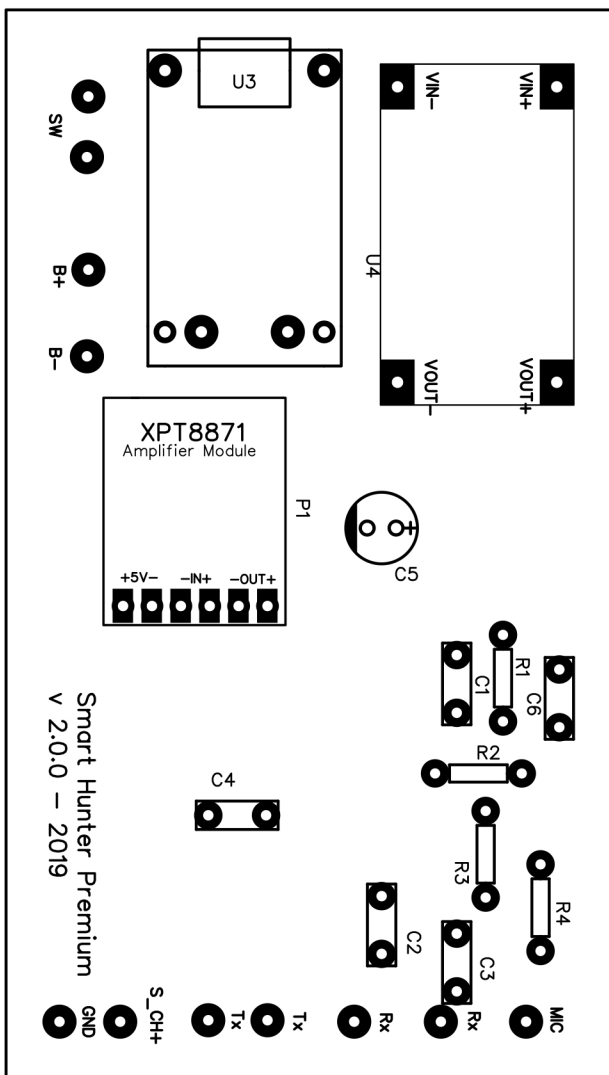


# Smart Hunter Premium

v 2.0.0

## Components list



**C1 - 10p**

**C2 - 0.033uF**

**C3 - 0.1uF**

**C4 - 0.1uF\***

**C5 - 500uF\***

**C6 - 0.1uF\***

**P1 - Amplifier XPT8871**

**R1 - 100K**

**R2 - 470**

**R3 - 100**

**R4 - 4.7K\***

**U1 - MCP6022**

**U2 - MT3608 (XY-016)**

**U3 - Lixx charger TC4056A**

**Battery 3.7 v;**

**Note: Set in the menu of the app "Rx divider" to 500 or 1000!**



**N.E.C.O - 2019**